



MMM Group



Selectomat PL

Always two steps ahead.

Sterilization safety.
High functionality.
Cost-effectiveness.

MMM.
Protecting
human
health.

Selectomat PL

Always two steps ahead.



Safety and reliability.

With the Selectomat PL, MMM has developed a state-of-the-art steam sterilizer which meets every demand of our customers and anticipates future requirements.

Safety is one of the most decisive factors in sterile processing. Successful sterilization is documented by batch protocols and print-outs generated through user-friendly software. The Selectomat PL steam sterilizers can deal with even the most complex sterilization tasks.

Thanks to quality German engineering, the Selectomat PL is a steam sterilizer designed to comply with German and European regulations on medical devices. Comprehensive quality management and thorough final testing in our manufacturing plants ensure that our customers get more than a "made in Germany" stamp.

The Selectomat PL meets all relevant CE directives (such as MDD 93/42/EEC and PED 97/23/EEC) and all important standards such as EN 285, DIN EN 60601 and DIN EN 61010 and bears the CE mark. The compliance with these guidelines is regularly audited. MMM is a certified company according to EN ISO 13485:2003 and EN ISO 9001:2000.

Model variety.

Selectomat PL is available in all standard chamber sizes with horizontal or vertical doors or as pit mounted installation (see supplementary sheet for technical details).

Cost effectiveness.

Modern hospitals need steam sterilizers that are cost-effective both with regard to initial investment and operating consumption. They must meet the required standards and offer high functionality with easy to understand operating tools.



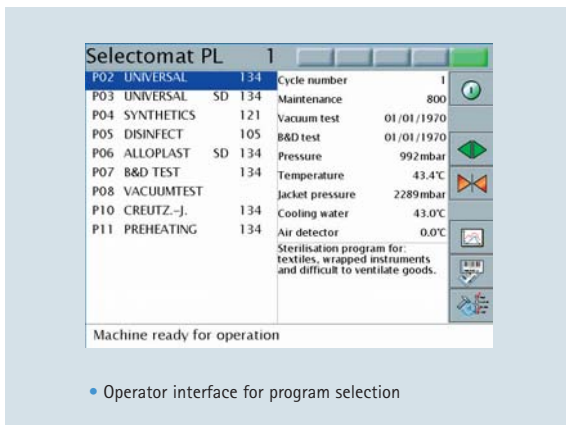
Thanks to the long lifetime and low consumption costs of our sterilizers, MMM quality products offer a sound return of investment. The outstandly low water and energy consumption makes the Selectomat PL unique in the market.

Backed by 50 years of experience, MMM is one of the global leaders in sterile processing. This is the promise we make to our customers: products of an extraordinary long service life and an exceedingly reliable performance, customer service of a short response time and spare parts availability for decades.

High functionality.

Clear touch screen.

Large buttons on a 10.4 inches touch screen and a well-structured program menu make the operation of the Selectomat PL very simple to use.

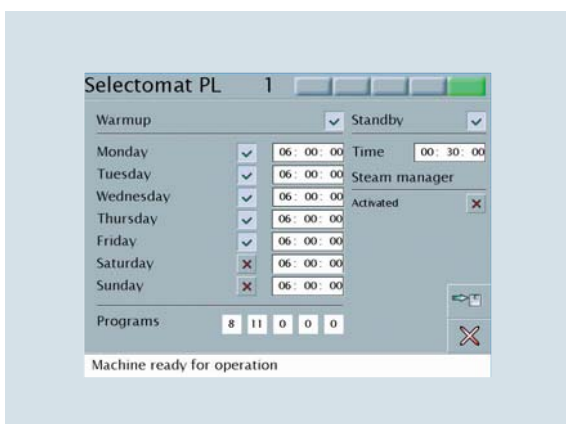


Program control.

The self-explanatory operator software is easy to understand and allows the user to set many functions and cycles. An intuitive operator guidance makes sure that the Selectomat PL will soon be your best friend in sterilization.

Autostart and standby function.

The unrivalled autostart function of the Selectomat PL allows an automatic start-up in the morning. It runs a warm-up program including a first cycle run without load. The Selectomat PL is ready whenever you are. Upon completion of the last cycle of the day, the standby function automatically activates a sleep-mode.



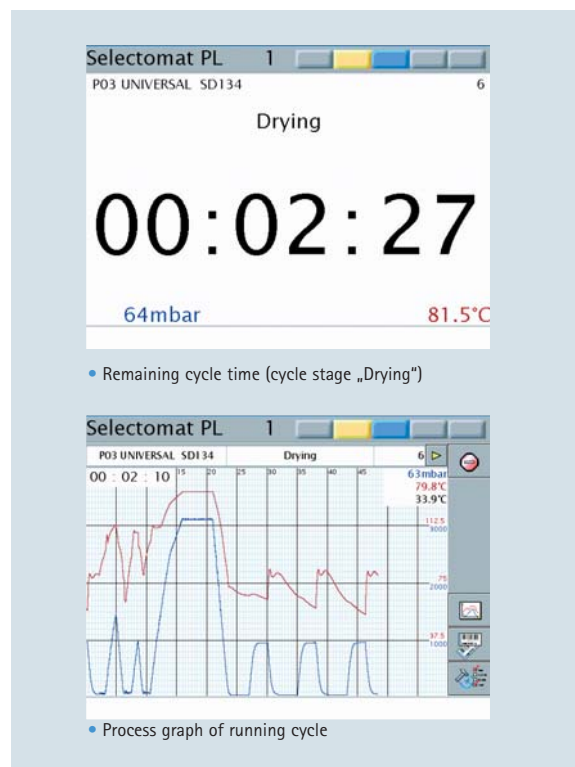
Independent steam generation.

For an independent clean steam supply the Selectomat PL can be equipped with a Unotherm electric steam generator installed externally or integrated in the sterilizer or with a Duotherm steam-to-steam generator.



TeleClock: display of remaining cycle time.

A large display of the remaining cycle time is integrated in the screen. It shows the remaining operating time of the running cycle thus allowing for an optimal workflow in your CSSD.





Reliable equipment.

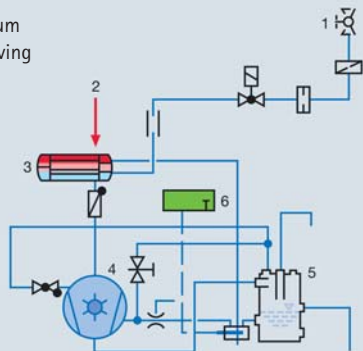
Vacuum pump.

The powerful and low-noise two-stage vacuum pump provides fast air-removal from the chamber, thus reducing the cycle times. A special water saving system helps reducing the water consumption. The vacuum pump normally runs in a cost-effective circulation operation and fresh water is tapped only if necessary.



Diagram of the vacuum device with water saving system.

- 1) fresh water
- 2) from chamber
- 3) heat exchanger
- 4) pump
- 5) circulation tank
- 6) thermostat



Documentation systems.

The process run and observance of the defined parameters can be monitored and documented by either internal or external documentation systems. Suitable interfaces allow the printing of batch protocols on various systems.





A powerful performance.

- Well-structured touch screen
- User-friendly operator guidance
- TeleClock: display of remaining cycle time
- Autostart and stand-by function
- Powerful low-noise vacuum pump
- Short cycle times
- Fully automatic or manual loading and unloading
- High cost-effectiveness thanks to low water and energy consumption
- Cycle data storage on internal storage medium
- Interface for external documentation systems
- German engineering and brand quality



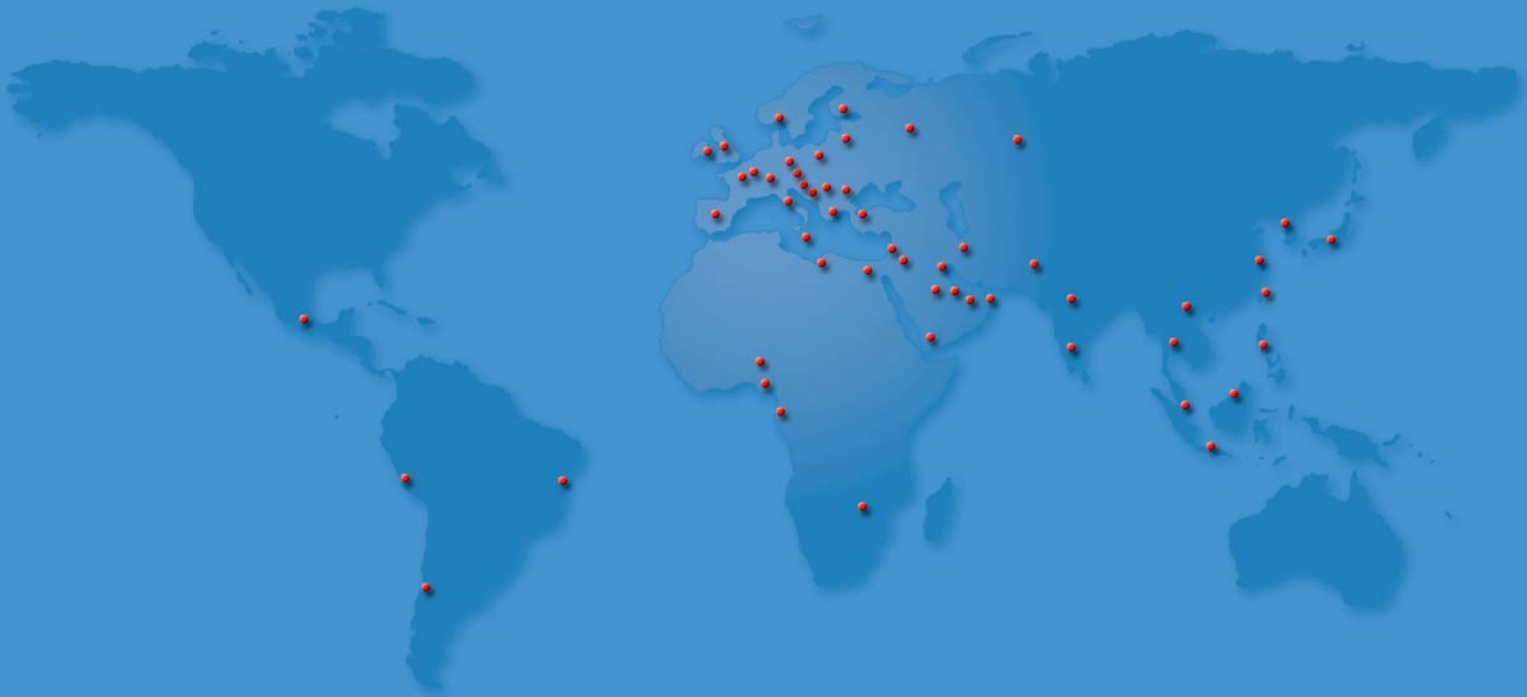
MMM Group

As one of the world's leading suppliers of sterile processing systems, MMM has been working actively to promote good health since 1954. With a full range of sterilization and disinfection products and services – that can be found in every branch of healthcare from hospitals and scientific institutes, to laboratories and the pharmaceutical industry – MMM, has over the years, consolidated its position as a pioneer of quality and innovation both in the German and international market. In our two production facilities based in Stadlern, Germany, and Brno, in the

Czech Republic, we manufacture products that meet the highest demands of our customers world wide. The depth and precision of production standards at both plants ensures that we accomplish the rigorous quality requirements of medical engineering.

900 competent employees work together as a committed and enthusiastic team, dedicated to achieving the mission of the MMM Group.

Protecting human health.



MMM Münchener
Medizin Mechanik GmbH
Sommelweisstraße 6
D-82152 Planegg / Munich
Phone: +49 89 89918-0
Fax: +49 89 89918-118
www.mmmgroup.com

Presented by:

